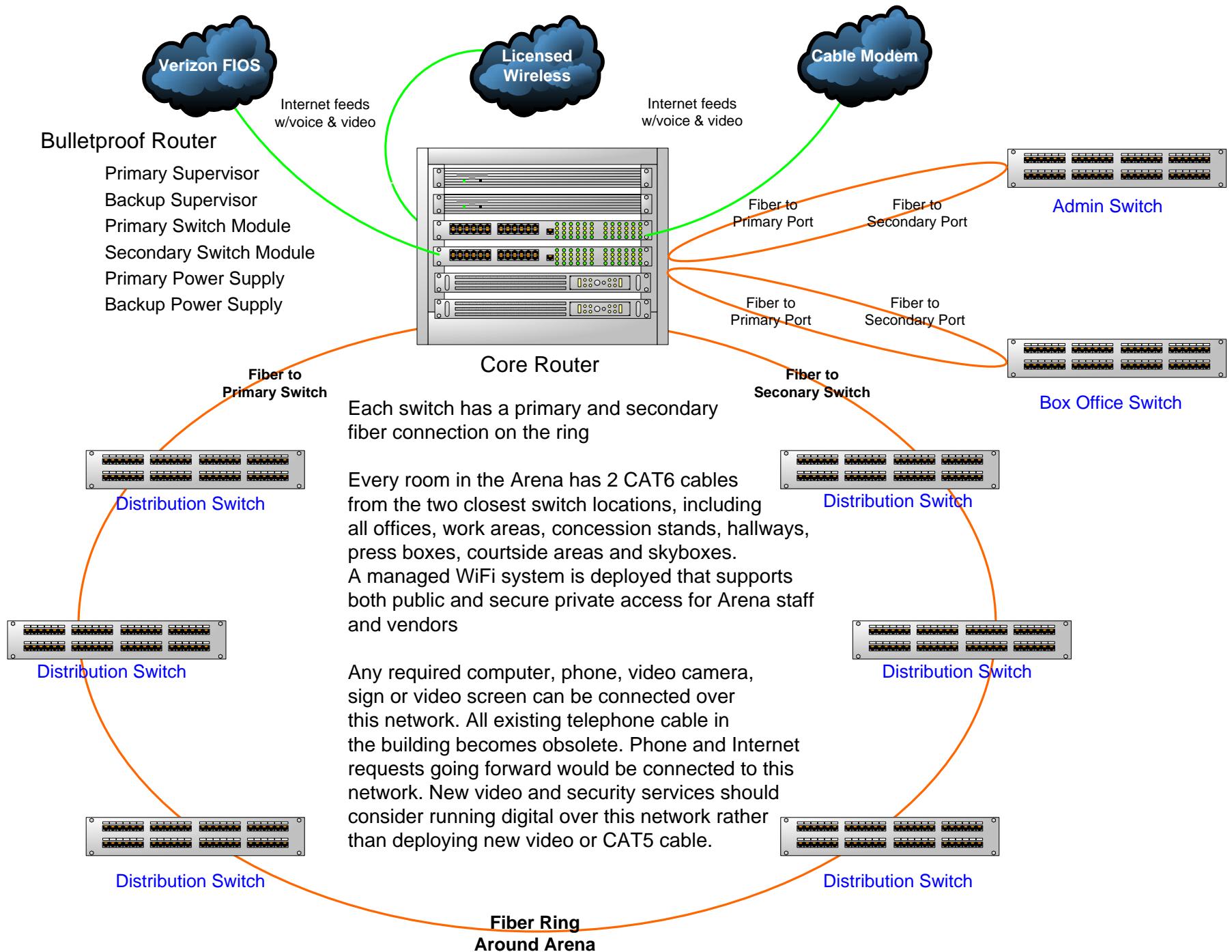


Ultra High Reliability Integrated Internet, Phone and Television Network



Each switch has a primary and secondary fiber connection on the ring

Every room in the Arena has 2 CAT6 cables from the two closest switch locations, including all offices, work areas, concession stands, hallways, press boxes, courtside areas and skyboxes. A managed WiFi system is deployed that supports both public and secure private access for Arena staff and vendors

Any required computer, phone, video camera, sign or video screen can be connected over this network. All existing telephone cable in the building becomes obsolete. Phone and Internet requests going forward would be connected to this network. New video and security services should consider running digital over this network rather than deploying new video or CAT5 cable.